

H10Z1218DC

10X 12mm - 120mm F1.8
for 1/2 type Cameras, Motorized Zoom
C-Mount

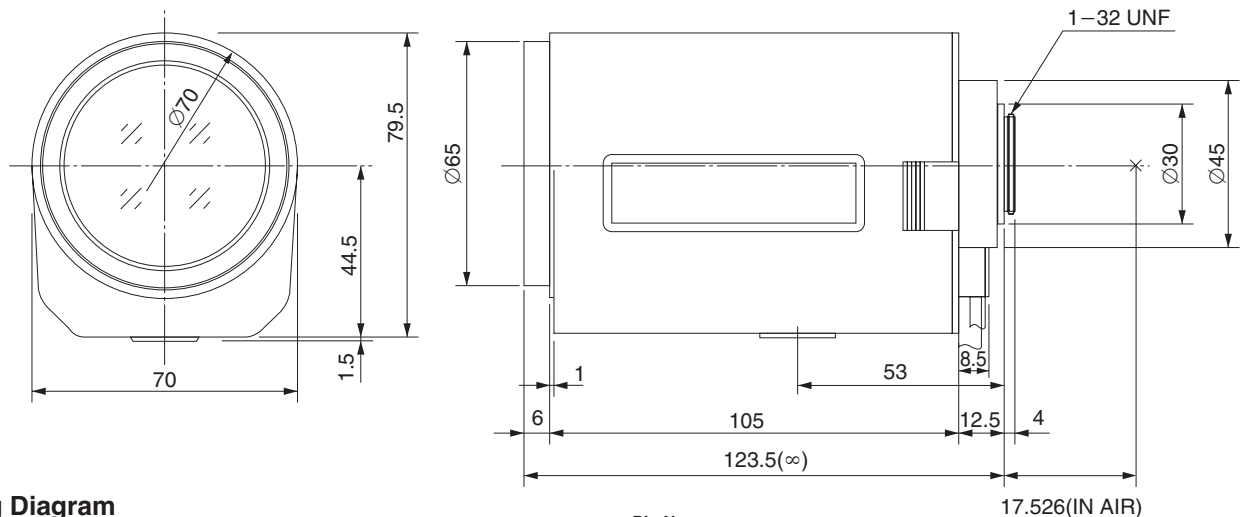
with DC Auto Iris

Model No.	H10Z1218DC		Effective	Front	Ø54.0mm		
Focal Length	12mm - 120mm		Lens Aperture	Rear	Ø9.2mm		
Max. Aperture Ratio	1:1.8		Back Focal Length		14.4mm		
Max. Image Format	6.4mm x 4.8mm(Ø8mm)		Flange Back Length		17.526mm		
Operation Range	Iris	F1.8 - F560C		Mount	C-Mount		
	Focus	1.5m - Inf.		Filter Size	M62 P=0.75mm		
	Zoom	12mm - 120mm		Tripod Screw	1/4 - 20UNC		
Control	Iris	DC Auto Iris		Dimensions	W70mm x H81mm x D123.5mm		
	Focus	Motorized		Weight	630g		
	Zoom	Motorized					
Object Dimension at M.O.D.	12mm	78.7cm x 58.9cm					
	120mm	8.1cm x 6cm					
Angle of View	D	1/2 type	36.4° - 3.8°	1/3 type	27.6° - 2.9°	1/4 type	20.8° - 2.1°
	H		29.4° - 3.1°				16.7° - 1.7°
	V		22.2° - 2.3°				12.5° - 1.3°
		Iris		Focus		Zoom	
Supply Voltage	—		DC8V		DC8V		
Current	—		40mA or less		35mA or less		
Response Time	—		Approx. 4.5 sec.		Approx. 3.5 sec.		
Preset Potentiometer	—		—		—		
Coil	Drive	190Ω					
	Control	1000Ω					
Operating Temperature	-10°C - +50°C						

1/2 type

C

Dimensions



Wiring Diagram

