

TG0812AFCS-3

8mm F1.2
for 1/3 type Cameras, Fixed-focal Auto Iris VIDEO Drive
CS-Mount

with Focus and Amplifier

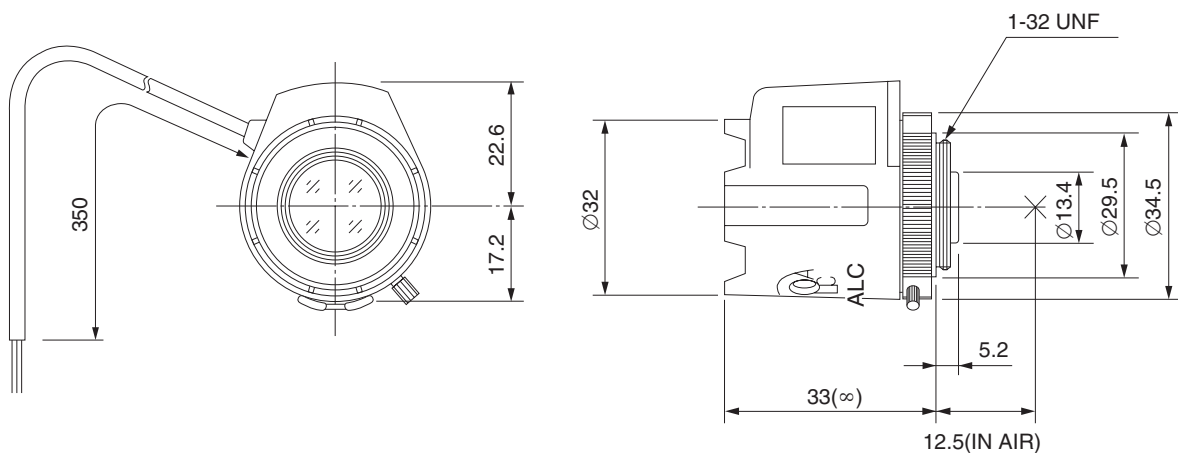
1/3
type

CS

Model No.	TG0812AFCS-3		Effective	Front	Ø15.0mm
Focal Length	8mm		Lens Aperture	Rear	Ø8.8mm
Max. Aperture Ratio	1:1.2		Back Focal Length	7.5mm	
Max. Image Format	4.8mm x 3.6mm(Ø6mm)		Flange Back Length	12.5mm	
Operation Range	Iris	F1.2 - F360C	Mount	CS-Mount	
	Focus	0.2m - Inf.	Filter Size	—	
Control	Iris	Video Auto Iris	Dimensions	Ø32mm x 39.8mm x 33mm	
	Focus	Manual	Weight	43g	
Object Dimension at M.O.D.	12.5cm x 9.2cm				
Angle of View	D	1/3 type	43.5°	1/4 type	32.4°
	H		34.7°		25.9°
	V		25.9°		16.4°
Supply Voltage	DC8V - DC16V				
Current	Less than 35mA				
Response Time	Approx. 2 sec.				
Light Weighting Method	Adjustable between Average - Peak (to be Set at Average at Factory)				
Input Signal	Video Signal (V. or V.S.)				
Iris Accuracy	±15% at Video Signal Level				
Sensitivity Adjustment	0.5V(p-p) - 1.0V(p-p) (Video Signal)				
Input Impedance	High Impedance				
Operating Temperature	-20°C - +50°C				

M.O.D : Minimum Object Distance

Dimensions



Wiring Diagram

